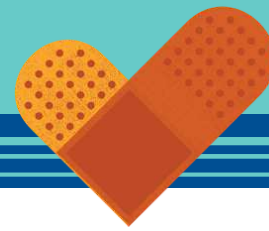
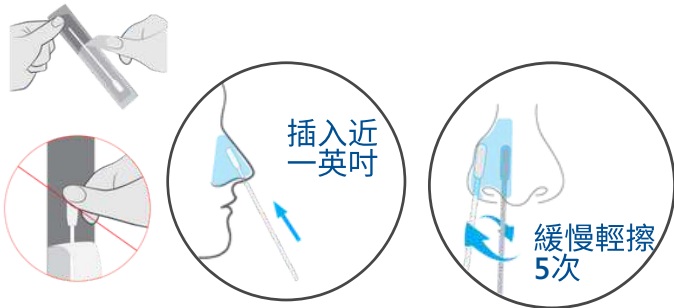


新冠肺炎自我檢測操作說明

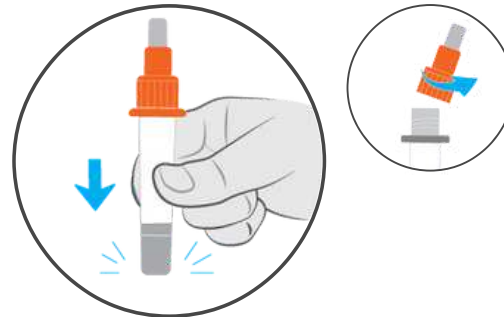


1 採集樣本



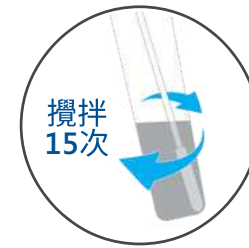
旋轉輕擦。用相同的拭子在另一鼻孔重複動作。

2 採樣過程



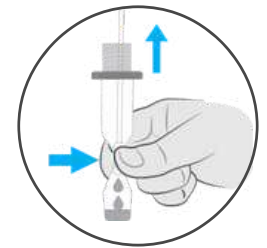
將試管在桌面輕敲

3



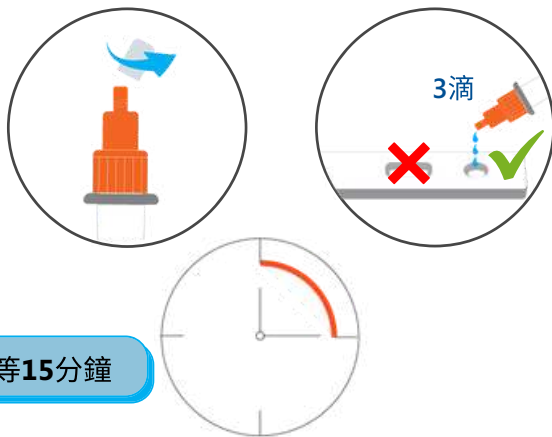
將拭子插入管中，直到碰到底部。

4



取出拭子。將拭子放回包裝中，安全的扔掉。

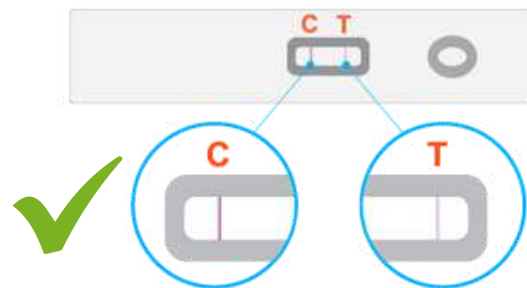
5 加入樣本



等15分鐘

打開新冠肺炎檢測卡。
在檢測卡上。滴 3 滴。不要觸碰到圓形孔。

6 讀取結果



若您看見 **C 線條**，代表測試是有效
注意 C 和 T 兩條線。

不要在15分鐘前或30分鐘後讀取結果。

7 解釋檢測結果

陽性結果會同時出現 **C 和 T 兩條線**



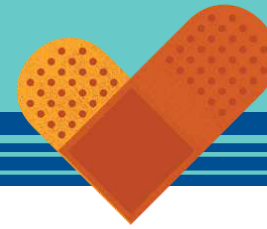
陰性結果只會出現 **C 線條**



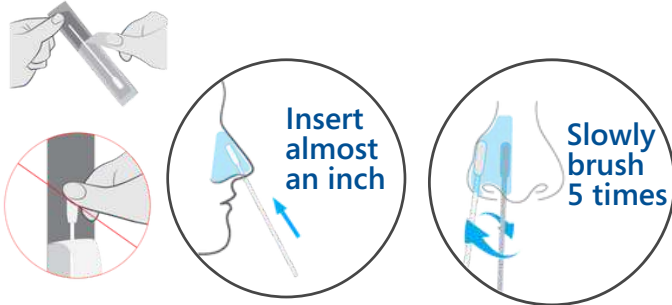
無效結果僅會出現 **T 線條**，或**沒有線條**。



COVID-19 Self-Test Instructions

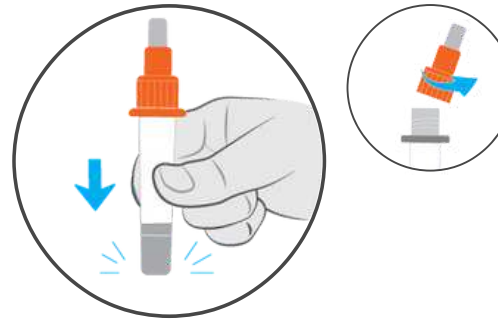


1 Collect Sample



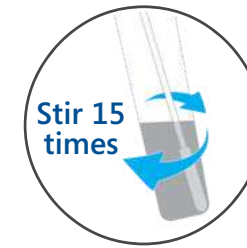
Brush in a circle. **Repeat on the other nostril using the same swab.**

2 Process Sample



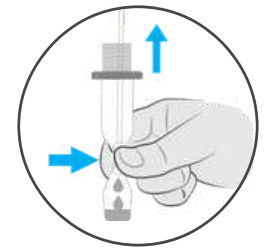
Tap the tube on the table.

3



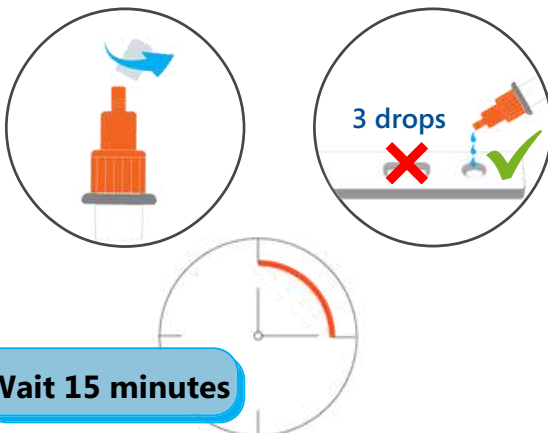
Insert the swab into the tube until it touches the bottom.

4



Squeeze all liquid out of the swab. Remove swab. Put swab back into the package. Safely throw away.

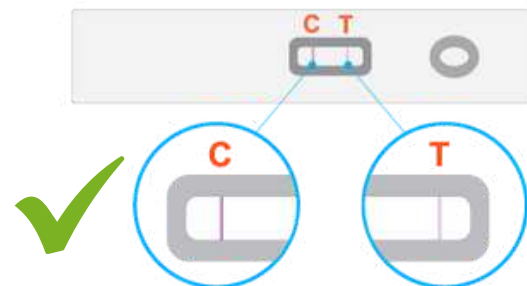
5 Add Sample



Wait 15 minutes

Open the COVID-19 test card. Add **3 drops** to the test card. Do not touch the hole.

6 Read Result



If you see a **C line** great job. The test is valid. Look for both a C and a T line. Do not read results **before 15 minutes** or **after 30 minutes**.

7 Test Result Explanation

Positive result must show a **C line** and a **T line**.



Negative result will only show a **C line**.



Invalid result will only show a **T line** or **no line**.

