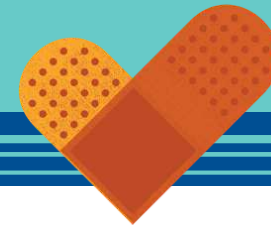


# Mga Tagubilin sa COVID-19 Self-Test

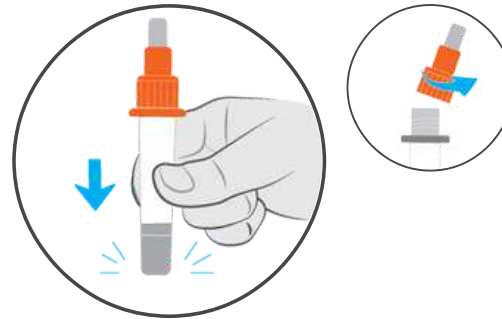


## 1 Magkolekta ng Sample



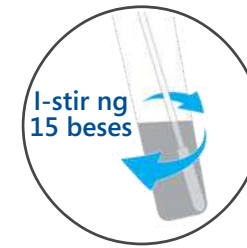
Paikot na i-brush. **Ulitin sa kabilang butas ng ilong gamit ang parehong swab.**

## 2 Iproseso ang Sample



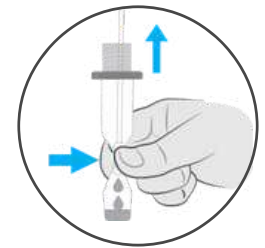
Tapikin ang tube sa lamesa

## 3



Ipasok ang swab sa tube hanggang ito ay umabot sa ilalim.

## 4



**Pisilin ang lahat ng likido palabas ng swab.** Tanggalin ang swab. Ibalik ang swab sa pakete. Ligtas na itapon ito.

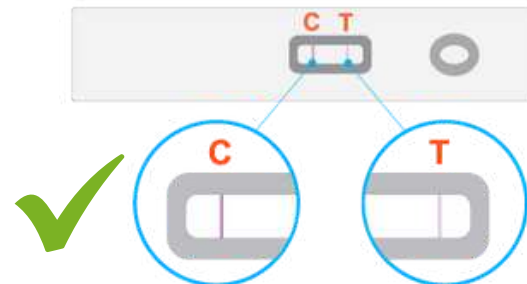
## 5 Idagdag ang Sample



**Maghintay ng 15 minuto**

Buksan ang COVID-19 test card. Magdagdag ng **3 patak** sa test card. Huwag hawakan ang butas.

## 6 Basahin ang Resulta



Kung nakakita kayo ng **C line**, mahusay. Ang test ay tama. Hanapin ang parehong C line at T line. Huwag basahin ang mga resulta bago **15 minuto o pagkatapos ng 30 minuto.**

## 7 Paliwanag sa Test Result

Ang **positibong resulta** ay dapat magpakita ng C line at T line.



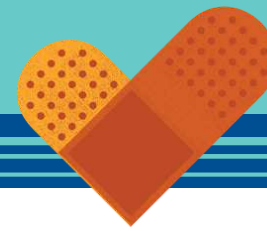
Ang **negatibong resulta** ay magpapakita lamang ng C line.



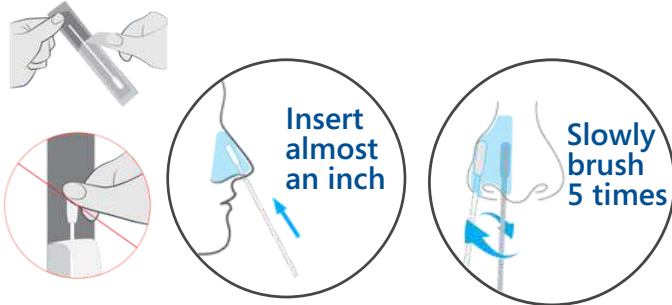
Ang **hindi tamang resulta** ay magpapakita lamang ng T line o walang linya.



# COVID-19 Self-Test Instructions

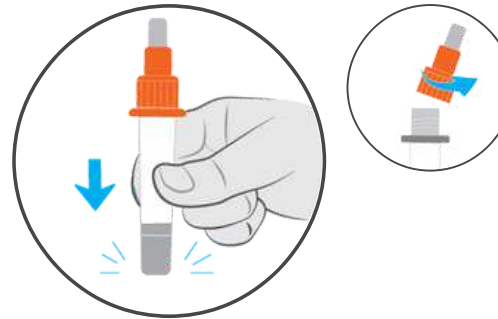


## 1 Collect Sample



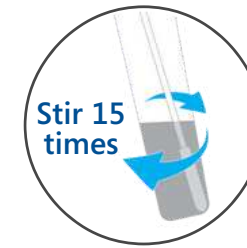
Brush in a circle. **Repeat on the other nostril using the same swab.**

## 2 Process Sample



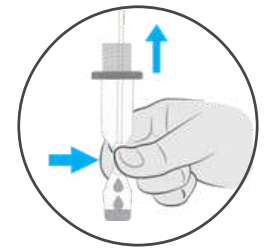
Tap the tube on the table.

## 3



Insert the swab into the tube until it touches the bottom.

## 4



**Squeeze all liquid out of the swab.** Remove swab. Put swab back into the package. Safely throw away.

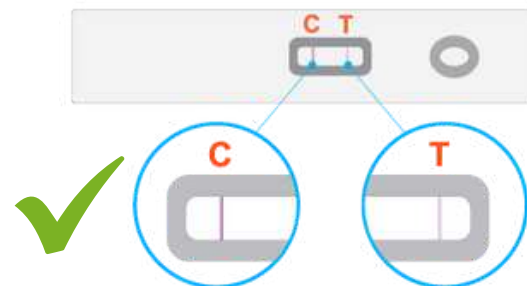
## 5 Add Sample



**Wait 15 minutes**

Open the COVID-19 test card. Add **3 drops** to the test card. Do not touch the hole.

## 6 Read Result



If you see a **C line** great job. The test is valid. Look for both a C and a T line. Do not read results **before 15 minutes** or **after 30 minutes**.

## 7 Test Result Explanation

**Positive result** must show a **C line** and a **T line**.



**Negative result** will only show a **C line**.



**Invalid result** will only show a **T line** or **no line**.

